

# 3 hybrid work challenges AI helps solve

How AI-enabled tools help people be connected and productive

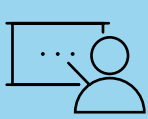


Connection is a key component for a healthy relationship with work, and 65% of workers using AI say they feel a greater sense of connection with their work.<sup>1</sup>

## Help everyone sound like a pro

The image our teams project to customers and clients is critical. Workers need to come through clearly without background sounds breaking through, and they need to present themselves confidently and fluidly.

- Select Poly headsets let every conversation shine with an AI machine learning algorithm that intelligently recognizes and reduces background noise to enhance call clarity.<sup>2</sup>



### Boost call clarity

The AI-enabled Speaker Coach<sup>3</sup> in PowerPoint provides personalized training and lets everyone on your team bring their point across like a pro.<sup>4</sup>

## Help everyone stay focused

Whether team members are working in or out of the office, online meetings are now a given for most. Make it easy to take video calls even in busy or distracting environments.

- Use AI voice commands to answer a call with your voice. Select headsets use machine learning to generate an algorithm that can process speech from a user and recognize specific commands to Answer or Ignore incoming calls.<sup>5</sup>



### Enhance collaboration

Windows Studio Effects in Microsoft Teams always helps your people look professional with AI assistance to keep eye contact, stay in frame, and maintain portrait lighting.<sup>7</sup>

## Support anytime, anyplace work

In hybrid work, not only do people need tools that can go anywhere, but they also need support wherever they may be. With most devices like a headset, there's no remote manageability.

- The Poly Lens app<sup>7</sup> lets you provide remote troubleshooting, updates, and inventory control for Poly headsets.



### Anticipate issues

The HP Workforce Experience Platform lets you manage devices of all kinds, including HP AI PCs, and uses predictive analytics and advanced automation to keep IT ahead of issues.<sup>10</sup>

From AI-enabled headsets and PCs to conferencing systems and manageability tools, HP and Poly help you help your hybrid work teams.

FIND THE HP AND POLY SOLUTIONS THAT FIT YOUR NEEDS

HP Services are governed by the applicable HP terms and conditions of service provided or indicated to Customer at the time of purchase. Customer may have additional statutory rights according to applicable local laws, and such rights are not in any way affected by the HP terms and conditions of service or the HP Limited Warranty provided with your HP Product.

<sup>1</sup> HP Work Relationship Index, "Workers' Need For Connection Is Redefining Work," accessed October 23, 2024, <https://www.hp.com/content/dam/sites/worldwide/apps/work-relationship-index/reports/collaboration-infographic/collaboration-infographic.pdf>

<sup>2</sup> Available with the Poly Voyager Free 20.

<sup>3</sup> Microsoft Team license required and sold separately.

<sup>4</sup> Microsoft, "Rehearse your slide show with Speaker Coach," accessed October 23, 2024, <https://support.microsoft.com/en-us/office/rehearse-your-slide-show-with-speaker-coach-cd7fc941-5c3b-498c-a225-83ef3f64f07b>

<sup>5</sup> Available with Poly Voyager Free 60 Series and Poly Voyager Surround Series.

<sup>6</sup> Microsoft, "Windows Studio Effects," accessed October 23, 2024, <https://support.microsoft.com/en-us/windows/windows-studio-effects-273c1fa8-2b3f-41b1-a587-7cc7a24b62d8>

<sup>7</sup> HP, "Poly Lens Device Management," accessed October 23, 2024, <https://www.hp.com/us-en/poly/software-and-services/software/poly-lens/app.html>

<sup>8</sup> The Workforce Experience Platform is planned to be available in a future release with optional, add-on modules. The Workforce Experience Platform is for commercial customers and requires registration. To register for access, visit <https://admin.hp.com>. Some features and capabilities may require additional purchase of HP services and/or commercial hardware capable of supporting the HP Insights agent for Windows, Mac, & Android. Activation and restrictions may apply. Select HP Workforce Solutions requires an HP Insights agent for Windows, Mac, & Android, available for download at <https://admin.hp.com/software>. For full system requirements and services that require the agent, please visit <https://admin.hp.com/requirements>. The agent collects telemetry and analytics around devices and applications that integrate into the Workforce Experience Platform and is not sold as a standalone service. Internet access with connection to the Workforce Experience Platform is required. HP follows stringent GDPR privacy regulations, and the platform is ISO27001, ISO27701, ISO27017 and SOC2 Type2 certified for Information Security.

<sup>9</sup> HP, "Workforce Experience," accessed October 23, 2024, <https://workforceexperience.hp.com/>